



Christiana Lodge is a 4-star guest lodge in the select suburb of Solar Beach in Plettenberg Bay.

It stretches over four properties, all interlinked:

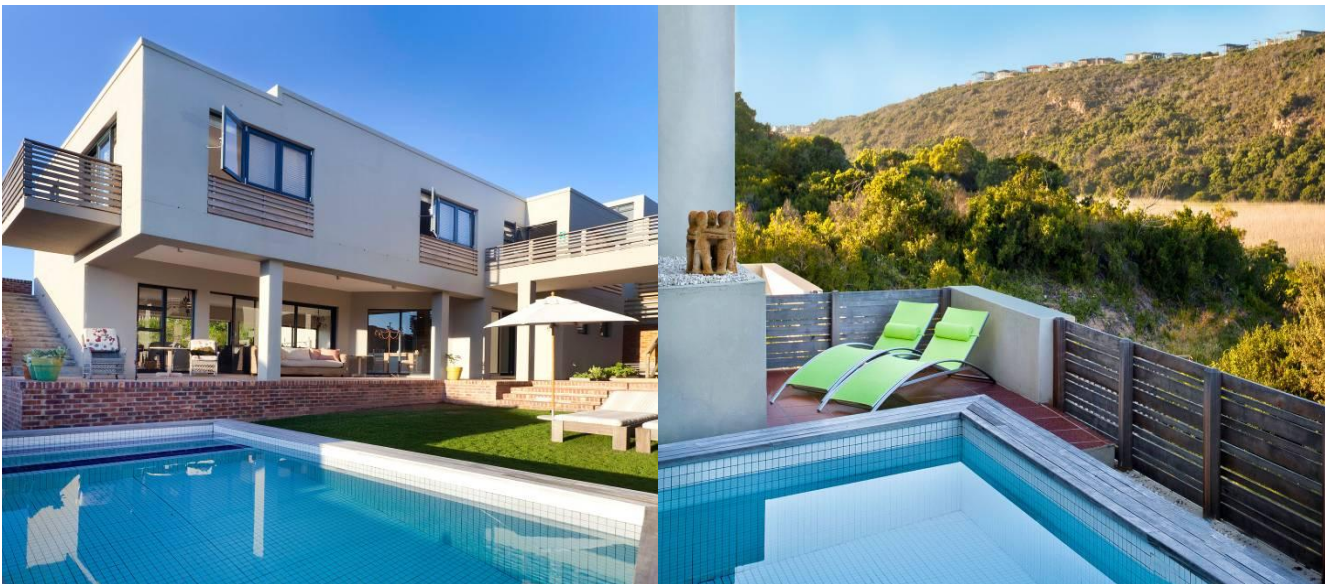
- Christiana Lodge
- House Philip
- Brakvlei House
- Brakkloof Self-Catering



- Total number of rooms: 17
- Self-catering unit: 1



The lodge is a short 5-min walk away from Robberg Beach and 4,5 km from the centre of town. Solar Beach is a quiet and very peaceful area, not suburban at all, and the lodge overlooks a nature area on the southern side and the Brakkloof wetland on the western side.



The lodge is owned by Christa Joubert and her brother Philip. Christa lives on the premises and manages the lodge on a full-time basis.

After a life-long career in the television industry (amongst others she produced the Sho't Left travel series for S A Tourism), she decided towards the end of 2007 to move to Plettenberg Bay. The lodge was built in 2008/9 and has been running since December 2009.

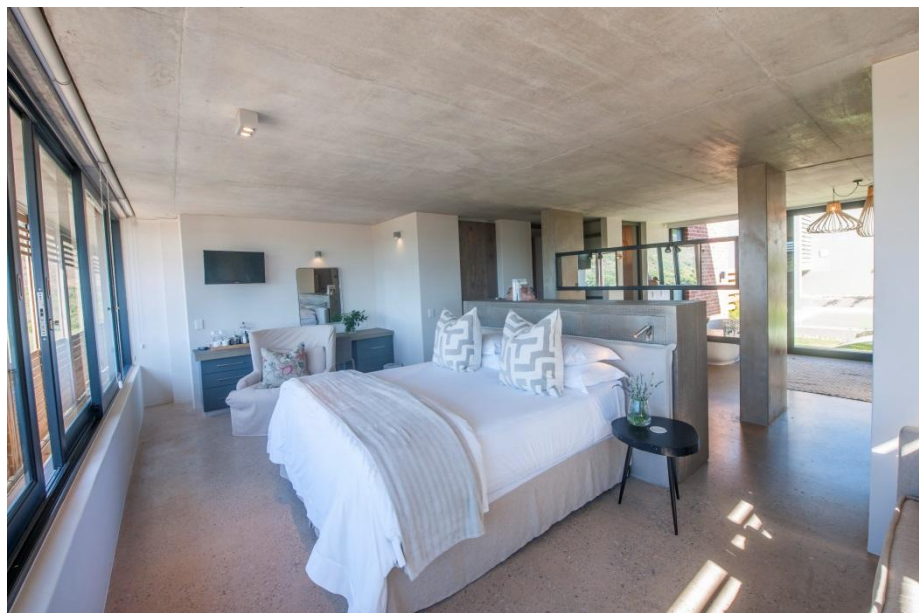
NEW! HOUSE PHILIP

House Philip is a boutique villa and is now part of the Christiana Lodge portfolio. It is no more than 15 meters from the main building.



The house has three rooms and breakfast is served in the lounge/dining area with views over the sea and the spectacular Robberg Peninsula.

Room 1 is a large room (60 sq m) with a daybed, walk-in cupboards, a large bathroom with a free-standing bath and double shower. It has its own swimming pool and garden area. Glimpses of the ocean from the room.



Room 2 is airy with huge windows overlooking the nature area across the road from the house. The bathroom has a shower, basin and toilet.

Room 3, or the Garden Room, is a spacious room (30 sq m) with a deck and garden area, separate toilet, double shower and basin.



ROOMS:

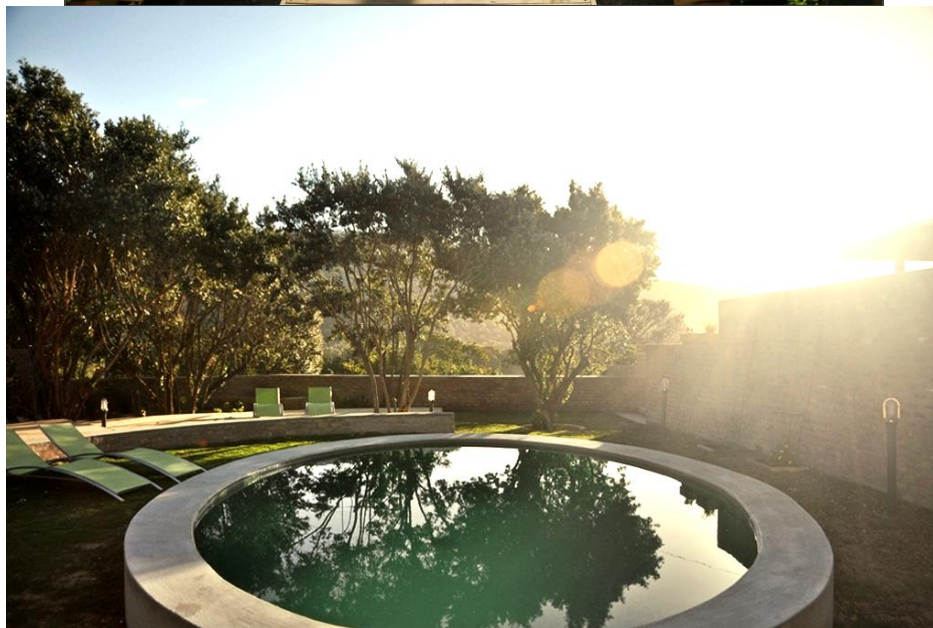
- Beds: All rooms have extra length, custom made king size beds; most of the rooms can be made up as twin rooms;
- The bedrooms are individually decorated, spacious and luxurious; the style is uncluttered. Careful attention has been given to detail – mirrors, hairdryers, position of the plugs, freshly baked biscuits, distilled water, safes, etc, etc;
- All bedrooms except room 7 have a spacious balcony or a deck or garden area;



- Internet access and flat screen televisions in all the rooms;
- Some bathrooms are equipped with under floor heating and most have a bath, separate shower and separate toilet;



- The use of space in the rest of the lodge makes for a variety of “living areas” where guests can kick back: covered patios, two pools, a large, elevated open verandah - all ideal for a breather after a day out;
- To make the most of the spectacular sunsets and intense golden afternoon light that bathes Plettenberg Bay, the Lodge is west facing. The overall effect is of nature - lots of light, sun, warmth and open air, with interior colours and effects that blend into the environment;



- SUPERIOR ROOM 11: Spacious, private, views over the Brakkloof Wetland



- SUPERIOR ROOM9 has air-conditioning, its own plunge pool and an outdoor shower:



- SUPERIOR ROOM 5 has its own private deck and an outdoor shower



- SUPERIOR ROOM 6 has its own tv lounge, private deck and outdoor shower



- SUPERIOR ROOM 4 has the best view of the ocean from its balcony:



For information on and pictures of all our rooms, please go to our website:

www.christianalodge.com

BRAKVLEI



The three-bedroomed house is on the property next to the guesthouse; the two properties are inter-linked.

- The house has an open plan lounge/dining/kitchen area and three bedrooms – two on the ground floor and one on the first floor.
 - The bedrooms on the ground floor both have doors opening onto their own private garden area.
 - Brakvlei can be booked on a self-catering basis, or the rooms can be booked individually on a B&B basis.
- BRAKVLEI SUPERIOR ROOM 1: one of our most spacious rooms with beautiful views over the Brakkloof wetland; balcony, study/writing area, bathroom with double shower and free-standing bath



- BRAKKLOOF SELF-CATERING UNIT: totally private; kitchen/dining/lounge area; en-suite bathroom with free-standing bath; beautiful views from the balcony over the Brakkloof Wetland



BREAKFAST AND DINNER

- Christiana Lodge serves a sumptuous breakfast: a bowl of fresh fruit salad, fruit juice, locally made muesli and quality yoghurt with honey, all the different varieties of bacon and eggs with mushrooms and tomatoes, or pancakes with stewed apple, yoghurt and almonds sprinkled on top, and Nespresso cappuccino. Each order is freshly prepared.

Dinner is served on request.



- The owners and managers have an intimate knowledge of the area and personally spend time with each guest to give guidance and advice on activities, restaurants, shopping, etc etc. Golf, hiking, canoeing, whale watching, bungi jumping, mountain biking, tree top canopy tours, the list is growing and they want to make sure that their guests have a true Plettenberg Bay experience.

